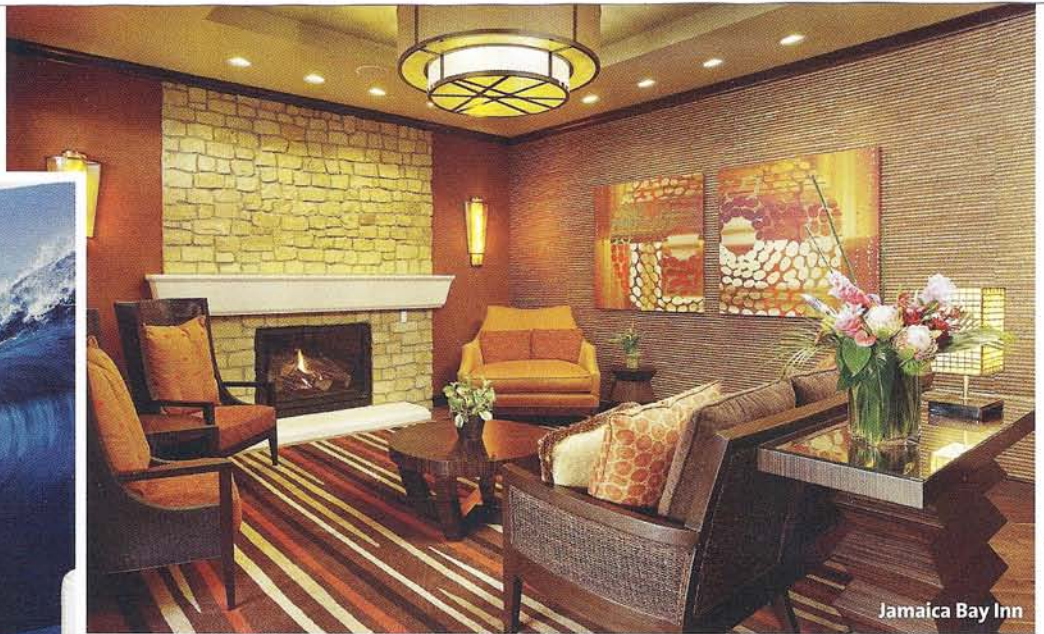




Pacific Edge Hotel



Jamaica Bay Inn

Los Angeles Hotels

Rest Stops

These new and revamped properties offer lodging and event space all over Southern California.

By ALESANDRA DUBIN

SBE debuted its new hotel property, **the Redbury** (1717 Vine St., 323.962.1717), in October. The suite-style property encourages longer-term stays with residential-style amenities. The entire boutique hotel is available for buyout, and every space within is also available for events. There are 57 suites, which offer 750 to 1,020 square feet of living space. A space known as the Glade has teak decking, oversized wicker furniture, daybeds, Moorish lanterns, and lush landscaping. It is available for events and has room for 150.

The **Jamaica Bay Inn** (4175 Admiralty Way, 310.823.5333) just opened in Marina del Rey, with a design meant to evoke a colorful and relaxed island resort, complete with lush landscaping, beachside pool, and marina views. The new 111-room hotel has indoor-outdoor fine dining, a pool, a hot tub, fire pits, a fitness center, and easy access to LAX. Off the lobby, the Antigua Room holds 75 people and has views and access to the terrace garden and the marina. The Barbados Boardroom has flat-panel audiovisual capabilities, executive leather chairs, and a dark wood conference table. Additionally, a spacious lawn accommodates small events with a beach backdrop. The property also has a 150-seat indoor-outdoor restaurant and bar named Vu, available for buyout.

The **Wyndham Orange County** (3350 Ave. of the Arts, Costa Mesa, 714.751.5100) has just undergone a

near complete redesign. A new business center has touch-screen technology and multimedia capabilities for all computers. The Wyndham offers four meeting and banquet spaces: the grand ballroom, which can be broken down into three separate rooms and holds 375; the garden room; the Costa Mesa Room; and the executive boardroom. All told, there is more than 7,200 square feet of flexible interior meeting space. Outside, the hotel's lakeside grounds provide more than 8,000 square feet of space that can also be used for events.

Joie de Vivre added a fifth Southern California property to its collection with the newly renovated **Pacific Edge Hotel** (647 South Coast Hwy., Laguna Beach, 949.281.5709), a property in the downtown district of Laguna Beach, with 28 suites and 104 guest rooms. The hotel also has two heated swimming pools and a Jacuzzi, a gym and spa, and a lounge for private events. The Villa, a newly refurbished 6,000-square-foot event space, has an expansive deck on the sand. Hide, a two-story beach cottage, is also available for meetings and events. On a 3,000-square-foot open-air beachfront deck, the Deck is a new lounge with views of the Pacific, fire pits, and a cocktail and food menu. Chef Michael Ingino helps the refurbished Beach House

restaurant, which offers a menu of locally caught fish and seasonally grown produce.

ON BIZBASH.COM
The latest venue news



Wyndham Orange County



Redbury



MY PREDICTION: "Event space will not be as readily available during peak periods, forcing planners back into longer-term booking cycles." Craig Corwin, manager of events, Sanford-Burnham Medical Research Institute, Orlando